

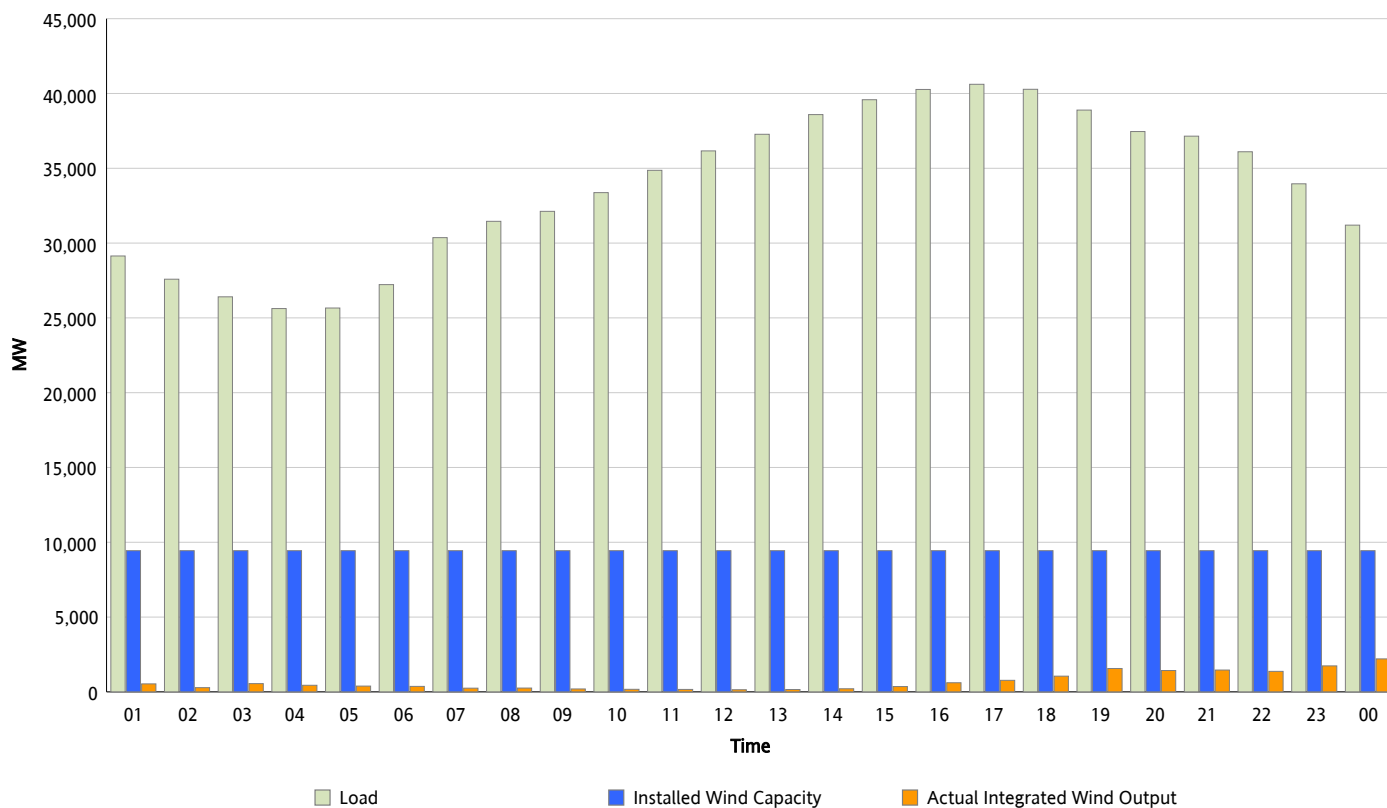


ERCOT Grid Operations

Wind Integration Report : 05/11/2012

Peak Load	40,616 MW
Load Peak Hour (HE)	17
Wind Over Peak	771 MW
Wind Record 04/13/12	7,925 MW
Max Wind Value*	2,417 MW
Wind Peak Time	23:55
Wind Integration %	8.02 %

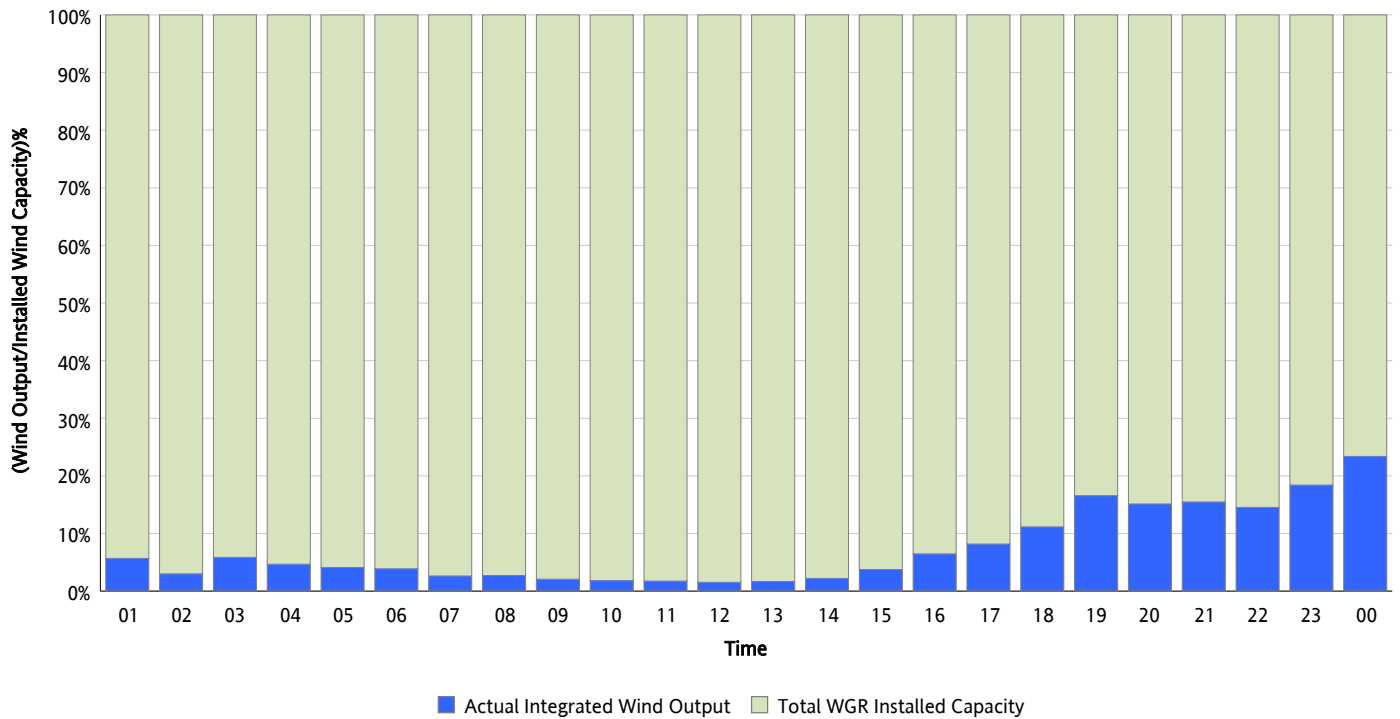
Hourly Average Actual Load vs. Actual Wind Output
05/11/2012



** Wind Record and Wind Max represent instantaneous values and the rest of the values are integrated over the hour*

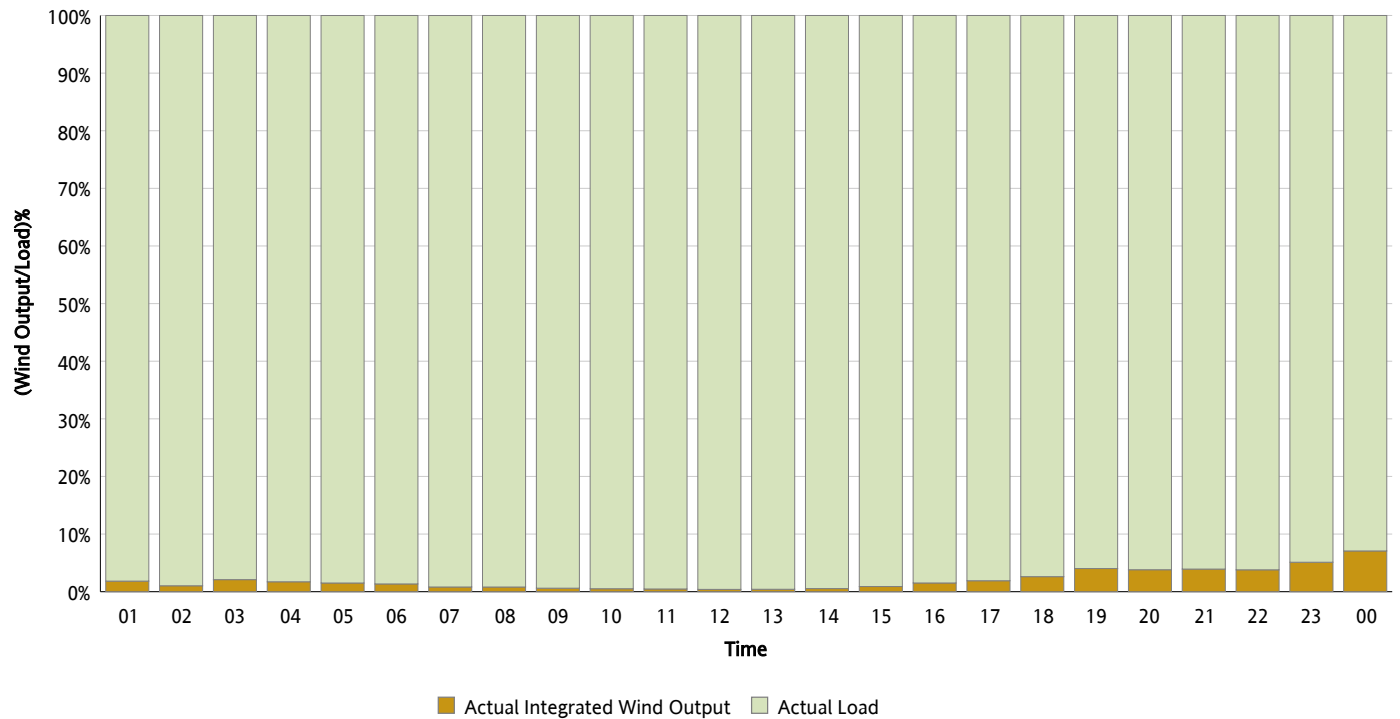
Actual Wind Output as a Percentage of the Total Installed Wind Capacity

05/11/2012



Actual Wind Output as a Percentage of the ERCOT Load

05/11/2012



ERCOT Load vs. Actual Wind Output

05/04/2012 - 05/11/2012

